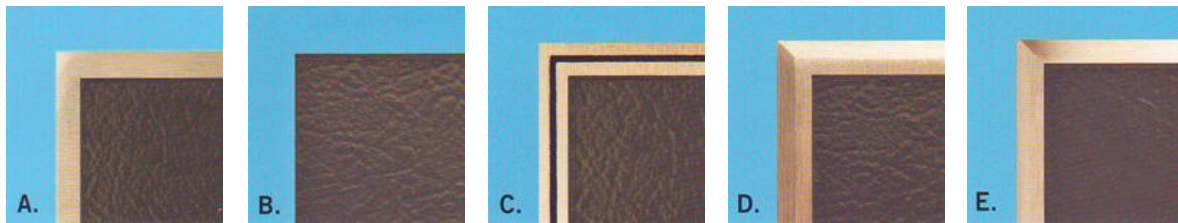


Cast Plaque Specifications

Border Style



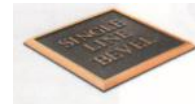
A. Single Line

B. No Border

C. Double Line

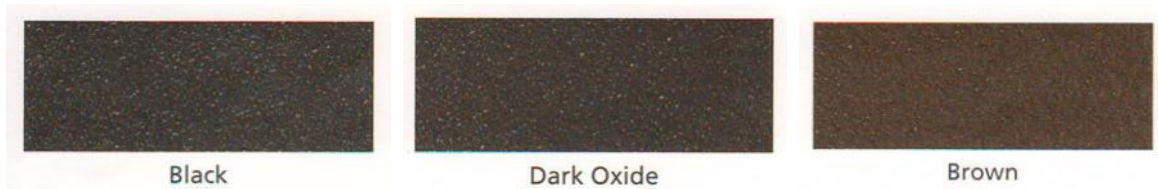
D. Single Line Bevel Edge

E. Bevel Edge



Allow additional space for Double Line & Single Line Bevel Edge Borders.

Background Color



Black

Dark Oxide

Brown

The most popular colors for backgrounds are black, dark oxide, and brown.



Other standard colors include grays, blues, greens, reds, and others.

Texture



Leatherette

Pebble

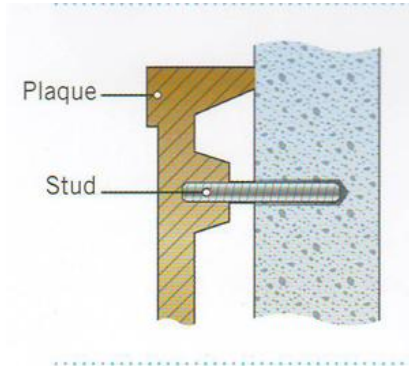
Stipple

Sand

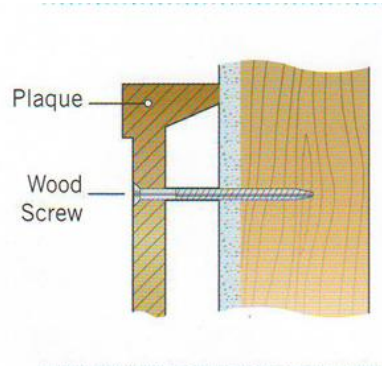
Leatherette texture is most popular, Pebble is next most popular, Sand is the smoothest. Other textures are available such as sculptured and travertine.

Cast Plaque Specifications

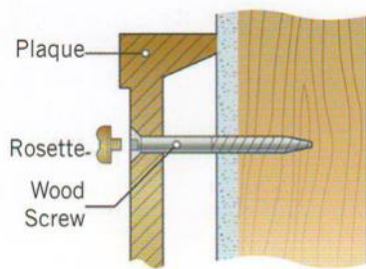
Mounting Methods



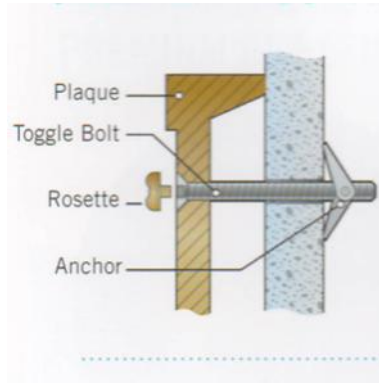
Blind Mount (Bosses & Studs, hardware goes under)



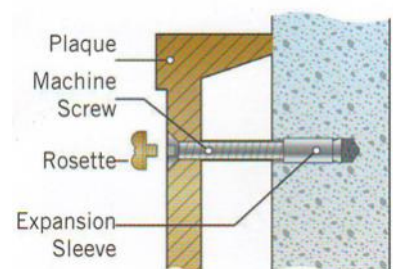
Simple Through the Face (no rosettes)



Wood Mount (with or without standard rosettes)



Toggle Mount (with or without standard rosettes)



Concrete Mount (with or without standard rosettes)

Standard Rosettes

R-5 below shows a true rosette in which the hardware goes through all the way. The others shown here are affixed over the hardware area with silicone sealant (included)

(Optional) Rosettes are decorative covers for the screw heads, typically in each corner of bronze and aluminum plaques (included in price). Rosettes are available in 1/2", 3/4", 1" and 1-1/2" diameters. Rosettes with highlights are oxidized, aluminum rosettes are bead blasted. Screw heads are painted to match plaque background. Additional and replacement rosettes are \$20 each.



R-1



R-2



R-3



R-4
1" & 1-1/2" only



R-5



R-6



R-7
1" & 1-1/2" only